

# EARTHY ENTITIES

## FOR THE CHALLENGES OF THE 21<sup>st</sup> CENTURY

*a project by Vero Córdoba (ARG) & Marina Stiegler (AT)*





## EARTHY ENTITIES FOR THE CHALLENGES OF THE 21<sup>st</sup> CENTURY

Archaic meets contemporary meets future

*Earthy Entities For The Challenges Of The 21<sup>st</sup> Century* aim to bring the archaic power of ritual and magical objects back into our modern lives. From the very beginning, cultures all over the world have worshipped life, nature, animals, people and deities. People from archaic cultures around the world seemed to have the urge to create symbolic objects with specific intentions to hold various ceremonies and rituals. These objects were used as mediation devices for a way of communication between the sacred (the transcendent or the supernatural) and daily life.

The two artists and creators of the **Earthy Entities** Verónica Córdoba (ARG) and Marina Stiegler (AT) asked themselves what kind of entities our world could need today to empower people to help people cope with the challenges coming their way, such as pollution (of the environment), poverty, hunger, isolating effects of media and technology, migration and xenophobia, discrimination, intolerance, totalitarian regimes, etc.

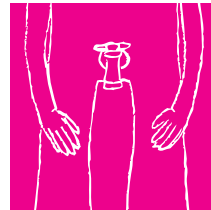
The creative process was guided by the following issues: topic selection; the design process, based on the reinterpretation of old forms and symbols in dialogue with elements of our contemporary visual cultures; the modelling process with clay as material for the creation of new figurines.

The first appearance of the **Earthy Entities** took place during an intense artist-tandem working period in the *Schaumbad – Freies Atelierhaus* in summer 2018 in Graz, Austria. Its outcome was exhibited there in the final exhibition *Rendezvous im Bad*. The *Entities* were presented as if they were an archaeological discovery made in the future.

During this tandem working time, eleven **Earthy Entities** were born, each with a different intention. These **Earthy Entities** are ready to travel into new exhibition spaces and spread their message.

Verónica Córdoba and Marina Stiegler plan to continue their contribution to the **Earthy Entity** family.

**contact:**  
[earthy.entities@gmail.com](mailto:earthy.entities@gmail.com)  
@f ..... earthy.entity



## WATER PROTECTOR

(2055-2099 A.D.)

In the 21<sup>st</sup> Century water was the new gold. 1,1 billions of people were without access to clean water. Only twenty companies shared the global supply market. This figurine has images of fishes on the head symbolizing the fight against the pollution of the oceans. The water tap presents the protection of drinking water. The figurines' posture shows it was always ready to stand strong against enemies and in case just tear them in pieces or pee on their heads.

### Measures

h: 27cm | w: 11,5cm | d: 6cm

### Technique

hand built sculpture

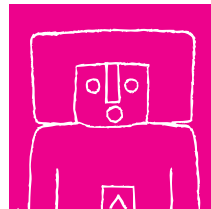
### Material

fired clay and acrylic paint

## SELECTOR

(2040-2050 A.D.)

While people in developing countries in the 21<sup>st</sup> Century had to face poverty, people in so called developed countries were faced with a nearly ridiculous variety, millions of possibilities and permanent reachability. Making decisions and commitments was a big challenge. This figurine was used in rituals for decision making. Its shape is related to a remote control and the button was symbolically pressed in ceremonies and dances for finding the right channel.



### Measures

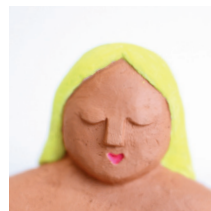
h: 19cm | w: 7cm | d: 4,5cm

### Technique

hand built sculpture

### Material

fired clay and acrylic paint



## SELF EMBRACING FIGURINE

(2066-2088 A.D.)

The 21<sup>st</sup> Century was the *supermodel*-era. Media and advertisements spread a contemporary ideal of beauty around the globe. Ideal measurements for models were androgynous 90/60/90. Many people, especially women, developed eating disorders and self-hate, because they could not fulfill this unrealistic ideal. This Self Embracing Figurine was used in strong women circles and rituals for self-tolerance, self-love and pleasure.

### Measures

h: 15cm | w: 11cm | d: 10cm

### Technique

hand built sculpture

### Material

fired clay and acrylic paint

## OPEN MOUTH FIGURINE

(2077-2089 A.D.)

Although society and technology was highly developed, there were still totalitarian regimes and censorship in the 21<sup>st</sup> Century. People got arrested and even executed for resisting and speaking their truth. This Open Mouth Figurine was used as a ritual vessel in secret meetings and circles of so called rebels who did not allow the system to oppress them. The widely open mouth symbolizes the freedom of speech and could be also filled with magic words of truth and freedom.



### Measures

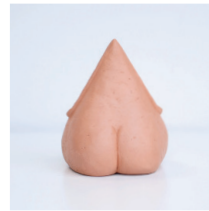
h: 10cm | w: 10cm | d: 15cm

### Technique

hand built sculpture

### Material

fired clay and acrylic paint



## GUTMENSCHEN-PROTECTOR

(2017-2020 A.D.)

In the 21<sup>st</sup> Century Europe had to face a refugee wave and an increasing xenophobic development in the same time. The word *Gutmensch* (do-gooder) came into discredit and people helping and welcoming refugees were attacked. It was a time in human history where it was questioned if being good was a good thing. This figurine has a heart-shaped body and a very soft expression. Rituals with this figurine were held to anchor the wish and human ability to be good.

### Measures

h: 13,5cm | w: 11cm | d: 8cm

### Technique

hand built sculpture

### Material

fired clay and acrylic paint

## THE MEETING POINT

(2080 - 2090 A.D.)

Across the world the rights to freedom of association and peaceful assembly came under attack. The space in which human rights defenders, political activists and civil society organizations could exercise their civil rights was increasingly restricted. This united figures represent the right to join, to defend and protect something common. The structure above them shows the strength of being together. The faces in line with the cardinal directions symbolize a global resistance.



### Measures

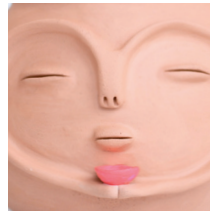
h: 10cm | w: 17cm | d: 17cm

### Technique

hand built sculpture

### Material

fired clay and acrylic paint



## OFFERING VESSEL

(2030 – 2050 A.D.)

In the 21<sup>st</sup> Century 11% of the world population suffered hunger. Around 815 millions of people did not have access to food or healthy eating due to poverty and exclusion, aggravated by war, migrations and climate changes. This vessel is a typical double-character-figurine of this era. One character offers food and the other receives it. Many hands surround them with bowls symbolizing solidarity, fair distribution of wealth and the daily fight against hunger.

### Measures

h: 19cm | w: 21cm | d: 19cm

### Technique

hand built sculpture

### Material

fired clay and acrylic paint

## BOTTLE WITH POWER BUTTON

(2030 – 2060 A.D.)

This entity has a round shape as a nose and mouth that symbolized the action of turning on or off. Power buttons were found on all kind of computers and mobile devices. This figurine could have represented the ability to switch on or off the connection with the outside. It was used in rituals to connect with one self. This object encouraged to put energy in a self conscious experience without stimulation from outside and to sleep or hibernate when needed.



### Measures

d: 10cm | h: 10cm

### Technique

hand built sculpture

### Material

fired clay and acrylic paint



## BOTTLE WITH FULL SIGNAL

(2040 – 2050 A.D.)

The rushing evolution of technology changed daily life and human communication. Hyper-connectivity and technological dependence affected human relations as people spent most of the time in front of the screen. This entity shows a head with two faces with a full signal symbol. This refers to the possibility of being connected with each other. This figurine pointed out the importance of communication in a real, personal and deep way even if connected with personal devices.

### Measures

h: 17cm | w: 15cm | d: 11cm

### Technique

hand built sculpture

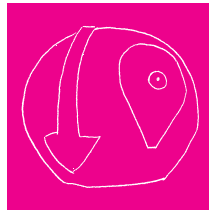
### Material

fired clay and acrylic paint

## LOCATION MASK

(2070 – 2085 A.D.)

Technology and digitalization changed the way to see the world and perception of the space. People explored and navigated with the illusion of being in different places around the world. Sometimes people missed the real experience of their own presence and lived the illusion of being in a virtual space. This bird shaped entity was used in rituals to awake human perception as a reminder of being here and now. The object symbolizes a wide vision and a sense of location as part of our nature.



### Measures

d: 12cm | h: 10cm

### Technique

hand built sculpture

### Material

fired clay and acrylic paint



## DIVERSITY FIGURINES

(2030 – 2060 A.D.)

In the 21<sup>st</sup> Century many people faced persistent discrimination, harassment and violence because of gender, sexual orientation, appearance, cultural, religious, economical, ethnical and political matters. These entities show a variety of shapes and surface colours symbolizing the expression of individuality and diversity. It could have been used as an empowerment object in working-places, schools, streets, public toilets, and wherever it was needed to fight against discrimination.

### Measures

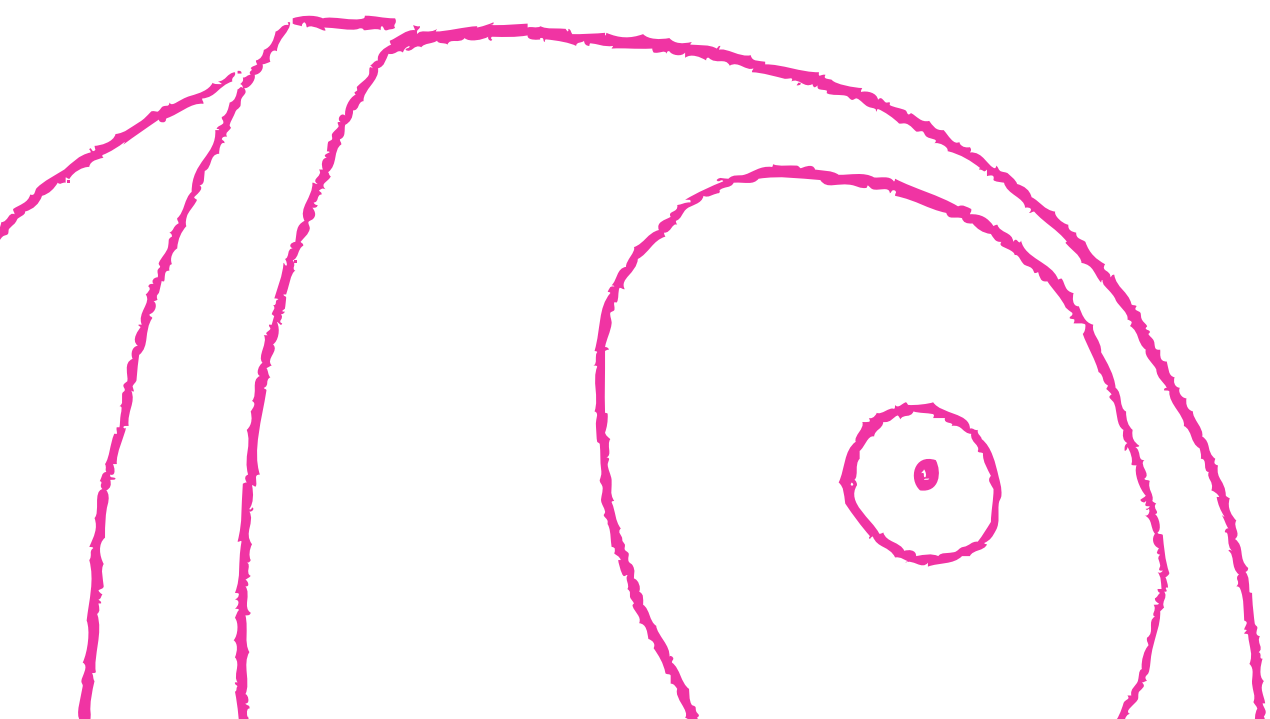
35 pieces | ≈ 9cm x 5cm

### Technique

hand built sculpture

### Material

fired clay and acrylic paint





## EXHIBITION DESCRIPTION

In the year 2525 archaeologists made a sensational discovery. A testimony of the society of the 21<sup>st</sup> century and what human kind had to cope with during this time. Challenges such as pollution (of the environment), poverty, hunger, isolating effects of media and technology, migration and xenophobia, discrimination, intolerance, totalitarian regimes, etc.

This archaeological discovery consists of eleven sacred clay-objects. These so called **Earthy Entities** were used in ritual contexts for empowerment and healing. They embody and materialize people's vision and desire to live differently and in peace.

An international team of archeologists continues the excavation process.



## MARINA STIEGLER

*\*1978 in Salzburg, Austria*

*Lives and works in Graz, Austria*

Marina Stiegler is an investigator of archaic forms and symbols of different ancient cultures. She deals with ritual constructs and how they can (trans-) form communities and social structures.

For her sculptures and objects she transcribes these archaic forms into a contemporary and unique individual aesthetic. Her artistic work finds its expression in painting, sculpture, installations, illustration as well as art in public space and, in addition, in music. The most important materials she works with come from nature such as clay, earth pigments, wood, cob, hay, etc.

Besides the realization of art-projects and participation in exhibitions she is highly interested and engaged in the connection between art and social issues.

She studied art therapy in Graz and combines her artistic work with a social approach. She conducts art workshops for young people and adults to accompany them in their search for their own form of expression.

## VERÓNICA CÓRDOBA

*\*1987 in Córdoba, Argentina*

*Lives and works in Córdoba, Argentina*

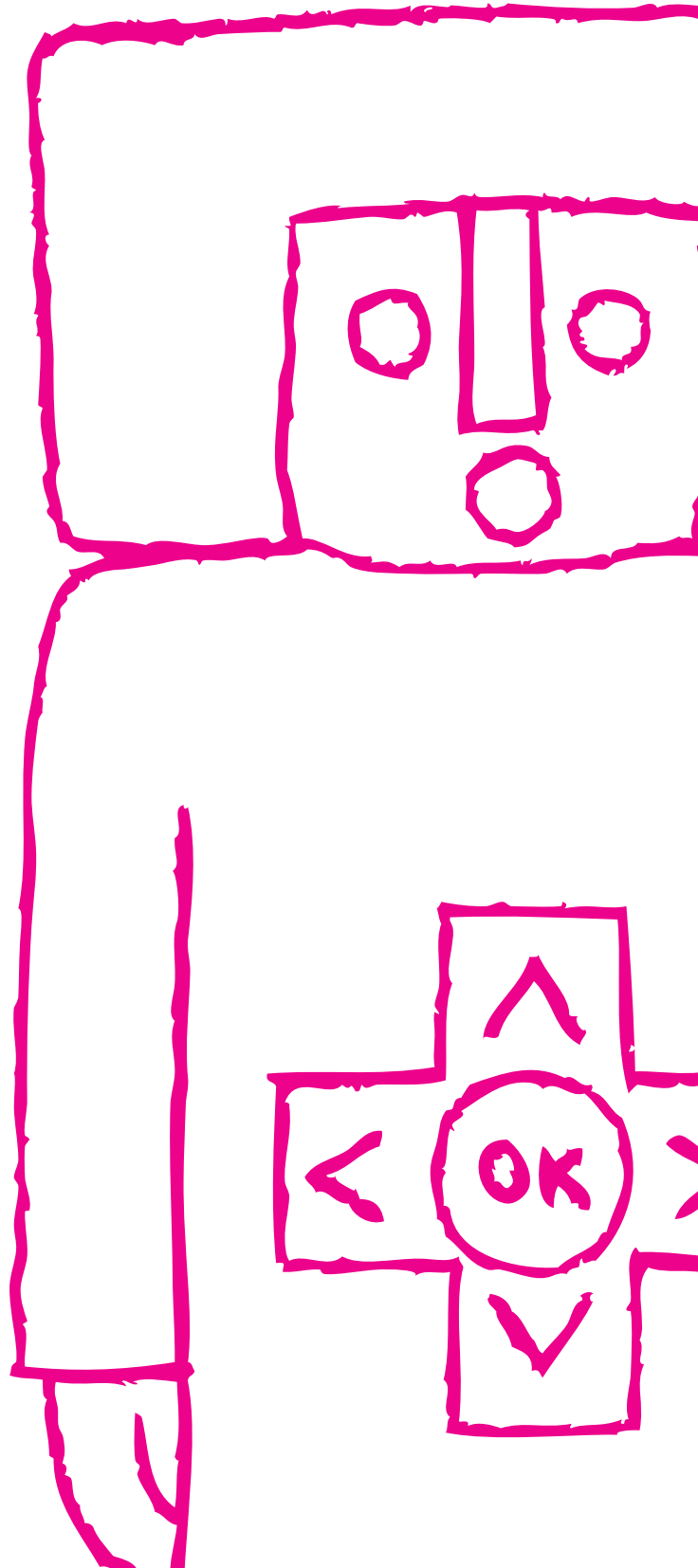
Her work is inspired by Latin American cultures, between ancient pre-Columbian ceramic designs and contemporary crafts, mainly with original modelling and wood firing techniques.

Her work is also based on synthetic forms, with a deep Latin American identity, in permanent dialogue with various forms of cultural expression.

She graduated in Social Communication Research, Universidad Nacional de Córdoba, Argentina, 2011.

From this knowledge she approached ceramics, with deep interest not only in the technical and creative aspects, but also in its cultural and social dimensions. So to say, as ancestral and living heritage of people from all over the world.

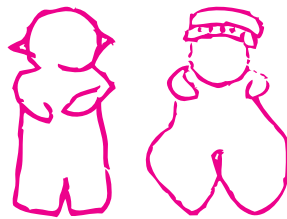
Her work deals with contemporary topics, such as the southamerican identity, human experience in diversity, mainly female position, feminism and sexual diversity in developing countries; migration and mixed cultures.





**MARINA STIEGLER**

web [www.marinastiegler.at](http://www.marinastiegler.at)  
email [marinaonearth@gmx.at](mailto:marinaonearth@gmx.at)  
phone [+43 6502001783](tel:+436502001783)



**VERÓNICA CÓRDOBA**

web [verocordobaceramic.wixsite.com/vero](http://verocordobaceramic.wixsite.com/vero)  
email [verocordobaceramica@gmail.com](mailto:verocordobaceramica@gmail.com)  
phone [+549 3515211795](tel:+5493515211795)